

Fax 303/539-8399
888/733-3456
80112-2445
Englewood, CO
7881 S. Wheeling Ct.
A Division of Bobrick
Koala Kare Products



Your unit can be installed to meet ADA regulations, when and where applicable. Refer to Federal Register, Volume 56, No. 144 28 CFR Part 36.
Thank you for selecting the Koala Bear Kare® Baby Changing Station.

Questions?

Please hand deliver to installer. Operating instructions on back page.

Tools which may be needed for installation:
Measuring Tape
Level
Regulair & Phillips Screwdrivers
Stud Finder
Pencil
7/32" Drill Bit (regulair & masonry)
1/8" Drill Bit (regulair & masonry)
1/2" Drill Bit (regulair & masonry)
Expansion nuts
Materials supplied (located inside liner dispenser):
4-1/4" x 3" panhead tapping screws
4-1/4" x 3" Phillips panhead machine screws
4-3/4" with 1/4" hole washers
4 toggles

To assure proper installation, we suggest that a qualified person or carpenter install the Koala Bear Kare® Baby Changing Station. Koala Kare Products will not be responsible if the station is not installed properly.
Koala Bear Kare® Baby Changing Stations have been tested to hold a static load up to 250 pounds. To do this, the unit must be attached to a wall that can hold that much weight. The station must be installed on a permanent wall that is capable of holding the unit and its hardware.

Please Note:

Important. Do Not Discard. INSTALLATION & OPERATING INSTRUCTIONS Horizontal Design Baby Changing Station

Model Numbers KB100 and KB110SSWM

Fax 303/539-9399
888/733-3456
80112-2445
Englewood, CO
7881 S. Wheeling Ct.
A Division of Bobrick
Koala Kare Products



Koala Kare Products
A Division of Bobrick

7881 S. Wheeling Ct.
Englewood, CO 80112-2445
888/733-3456
Fax 303/539-8399
www.koalabear.com

Important - Hand Deliver to Owner of this Unit. OPERATING INSTRUCTIONS

Horizontal Design Baby Changing Station

Model Numbers KB100 and KB110SSWM

You are responsible for the safe operation and use of this unit.

Inspection Criteria:

- A properly maintained Baby Changing Station:
- Opens and closes smoothly.
 - Has both ends of a functioning, non-frayed strap: buckle clicks when closed and strap is attached at both ends of unit.
 - Offers parents liners through a fully stocked liner dispenser. (Dispenser is built-in to unit).
 - Provides a clean, convenient place for customers to attend to their children.

To maintain the unit:

- Clean and sanitize regularly with an industrial strength solution. Rinse thoroughly.
- Test the opening and closing motions of the unit during cleaning. Make sure unit closes fully by itself.
- Take the time to inspect straps to ensure that they are in good working condition. Immediately replace a defective strap!
- Fill built-in liner dispenser with liners.
- Ensure that identification decal and door plaque are in place.
- Order any necessary replacement parts from Koala. (See box at right.)

To order replacement parts for your Baby Changing Station, please call 1-888-733-3456 and have this information available.

Method of Payment:

- Koala Account
- Visa
- MasterCard
- American Express

Available Parts:

- _____ horizontal straps @ \$13.00 each
- _____ horizontal gas shocks @ \$18.00 each
- _____ horizontal stainless steel gas shocks @ \$30.00 each
- _____ horizontal lid @ \$2.50 each
- _____ horizontal lid, black @ \$3.00 each
- _____ door decal (adheres to restroom door) @ \$10.00 each
- _____ warning label @ \$10.00 each
- _____ end caps for beige unit @ \$0.50 each
- _____ end caps for grey unit @ \$0.50 each
- _____ factory installed lock @ \$10.00 each

TOTAL ORDER: \$ _____

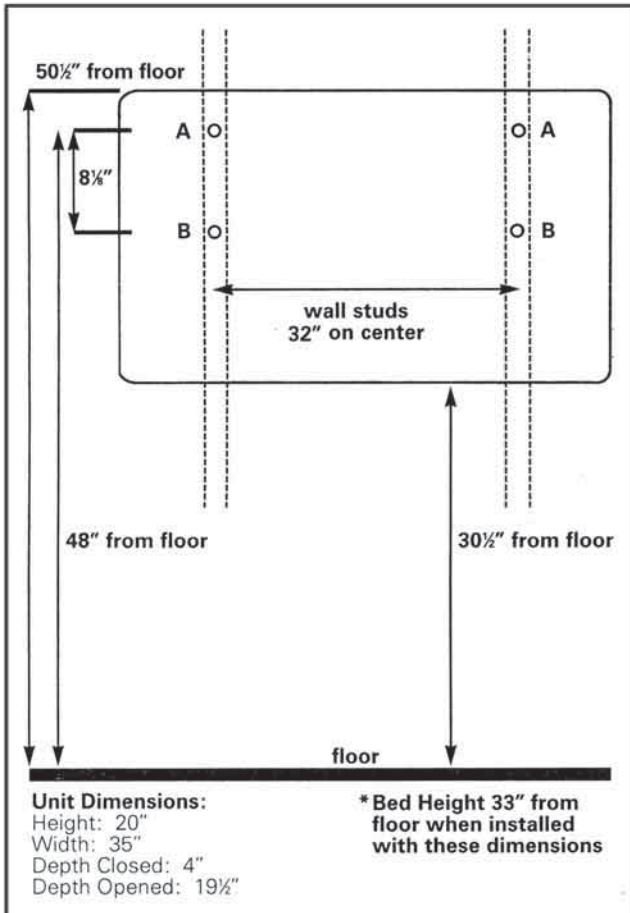
Appropriate tax and shipping and handling apply.

Important. Do Not Discard.

INSTALLATION INSTRUCTIONS

Horizontal Design Baby Changing Station

Model Numbers KB100 and KB110SSWM



Step 1.

Remove changing station from the shipping box and check for any freight damage. Identify the best location for installing the baby changing station. Hold the unit in place and open the bed. Make sure you've taken the operating clearance into consideration.

Step 2.

The horizontal unit has four mounting holes provided in the back wall of the unit. The four holes are positioned on a 32" stud center.

If possible, locate the wood or metal wall studs for fastening the changing station in the desired location. If the walls do not have studs on center as outlined, make sure at least one side of the unit is installed into the stud. Use toggles (supplied) for holes on the other side.

Step 3.

Find the stud where you will be attaching the left side of the changing station to the wall. Measure from the floor, at the center of the stud, and mark the wall. Line up Hole A with the mark you made on the wall. Mark remaining holes using a level and measuring tape to make sure holes are precisely positioned. Hold unit in place to check. Use the four 1/4" x 3" panhead tapping screws with washers (supplied) when wall studs are available.

Based upon the type of wall on which you will be mounting the station, determine the best method of mounting. You may have spare hardware left over when you are finished with installation.

If the wall surface is masonry or tile over wood studs, use a 7/32" masonry drill for the pilot hole until you hit the stud. Change bit to 1/8" regular drill. Use the four 1/4" x 3" panhead tapping screws with washers (supplied).

If the wall has wood studs that are not on 16" or 32" centers, has metal studs or an underlying surface of concrete block, drill with a 1/2" masonry bit. You must allow a minimum of 2-1/2" of inside wall space for toggles to turn. Insert and tighten toggles (supplied). Locate station over toggles and insert 1/4" x 3" Phillips panhead machine screws with washers (supplied).

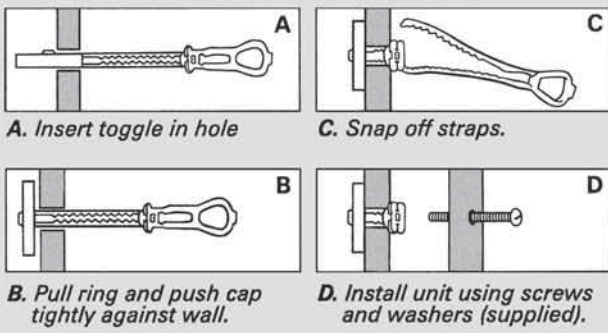
Step 4.

It may be necessary to adjust the squareness of the door, by using a shim on the top right or left side of the unit before tightening to the wall.

Step 5.

Place restroom sign (supplied) on the outside of the restroom door. Fill the built-in dispenser with sanitary bed liners. Replacement parts and additional liners can be purchased from your local distributor or by calling toll free 1-888-733-3456 in the U.S.

USING TOGGLES



Please hand deliver to installer.
 Operating instructions on back page.



7881 S. Wheeling Ct.
 Englewood, CO 80112-2445
 888/733-3456
 Fax 303/539-8399