



## INSTALLATION INSTRUCTIONS

### A8889 SERIES

Covers models:

**A8889-1 A8889-2 A8889-3 A8889-4**  
**A8889-1-EB A8889-2-EB A8889-3-EB A8889-4-EB**



Notice to Installer: Check material for damage or shortage immediately on receipt.

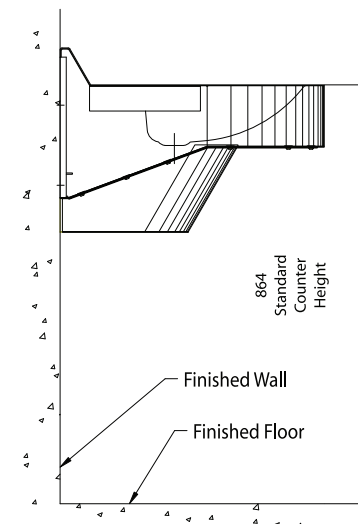
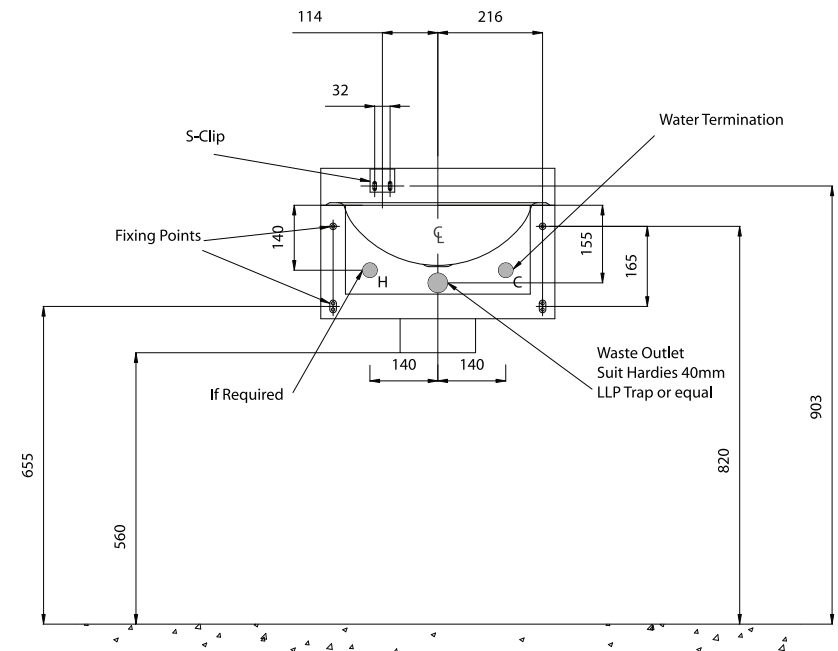


For further information,  
contact the nearest RBA Group office:  
SYDNEY • MELBOURNE • BRISBANE  
Phone: 1300 788 778 • Fax: 1300 788 878  
info@rba.com.au • www.rba.com.au

## INSTALLATION

- Mount Unit at heights as shown below for the relevant model or to meet architects recommendations or local codes.
- Check Architects drawings prior to installation for mounting locations and details.
- Remove the trap enclosure (if supplied) with a torx 25 security bit (not supplied – order separately – Part Number A111-99).
- Mount the S Clip (supplied) at point 4 enabling you to rest the basin
- Place the Unit over the S Clip and mark the holes for the other fixings (supplied by others to suit the wall type) checking the unit is level and plumb.
- Plumbing supply and water rough in should be as per drawing on page 3. Where two three or four station units are being installed these rough-ins should be centred from each bowl location.
- Install the Plug and waste supplied.
- Install a 40mm Low Level Hardies P Trap (supplied by others).
- Install the tap (supplied by others).
- Re-Install Trap Enclosure (if supplied).
- If unit was ordered without trap enclosure and you require it order part A8889-EB (single enclosure - you require 1 for each bowl).

## INSTALLATION



SIDE VIEW

