

SATIN FINISHED 18G TYPE 304 STAINLESS STEEL HOUSING

FIG. 2



For further information,
 contact the nearest RBA Group office:
 SYDNEY • MELBOURNE • BRISBANE
 Phone: 1300 788 778 • Fax: 1300 788 878
 info@rba.com.au • www.rba.com.au



INSTALLATION INSTRUCTIONS

ECO-RAIN SHOWER MODEL A486-W



INSTALLATION

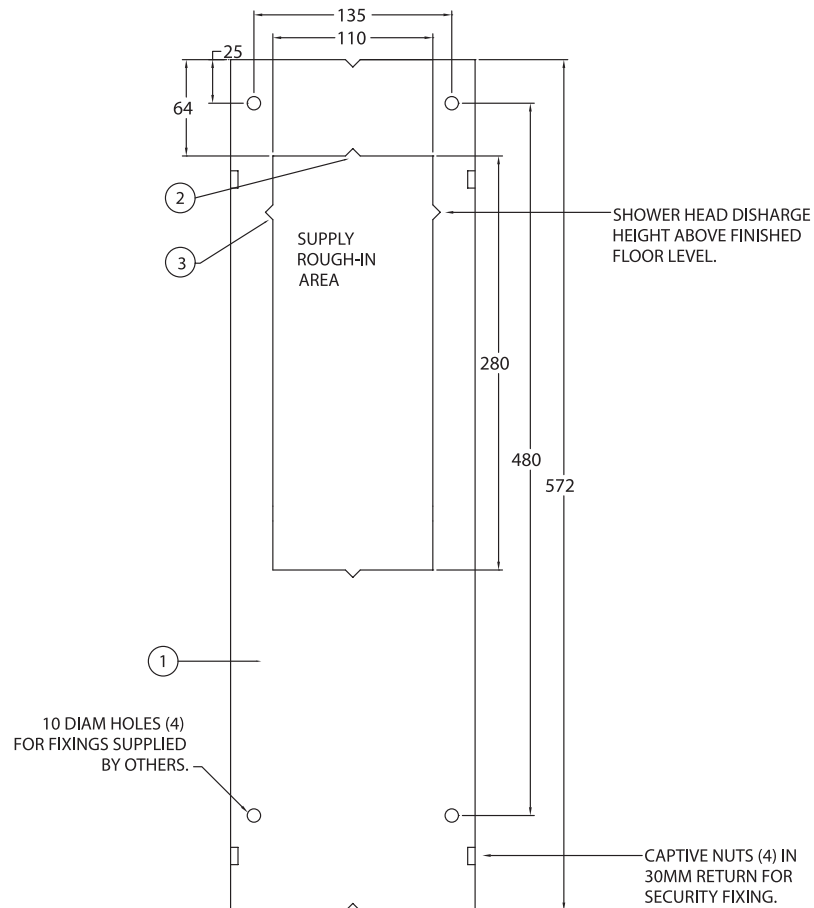


FIG. 1

COMPONENTS

- 1.2mm stainless steel concealed fixing bracket.
- Air Control single temperature self closing valve.
- 9.5l/m shower rose.
- 1.5mm stainless steel satin finish cover with recessed soap dish and pneumatic push button.
- Security fixing screws and bit.
- Plastic connection tube.

INSTALLATION

HYDRAULIC DATA

Minimum supply pressure	200 kPa
Maximum supply pressure	500 kPa
Minimum pipe size	15 mm
Connection termination	1/2" BSP
Shower rose flow rate	9.5 l/m

ROUGH-IN

FIG 1 – Page 2

Terminate the supply with a 1/2" mini cock, within the nominated cut-out area in the fixing bracket. Mount the fixing bracket (1) on the wall with the notches (3) at the desired height of the shower outlet. Vertical notches (2), represent the centre of the fixture. The fixing bracket should be secured to the wall with appropriate fixings supplied by others.

INSTALLATION

FIG 2 – Page 4

Flush lines until completely free of dirt etc before making connections to valve. Connection between mini-cock and valve must be made with a flexible braided hose as provided. Connect the pneumatic push button and supply to rose with the plastic tube provided.

Flow time may be adjusted before fitting the housing. See "Air Control Valve" installation instructions for valve adjustment etc.

The shower nozzle should be fitted last, and locked into position with an Allen Key.