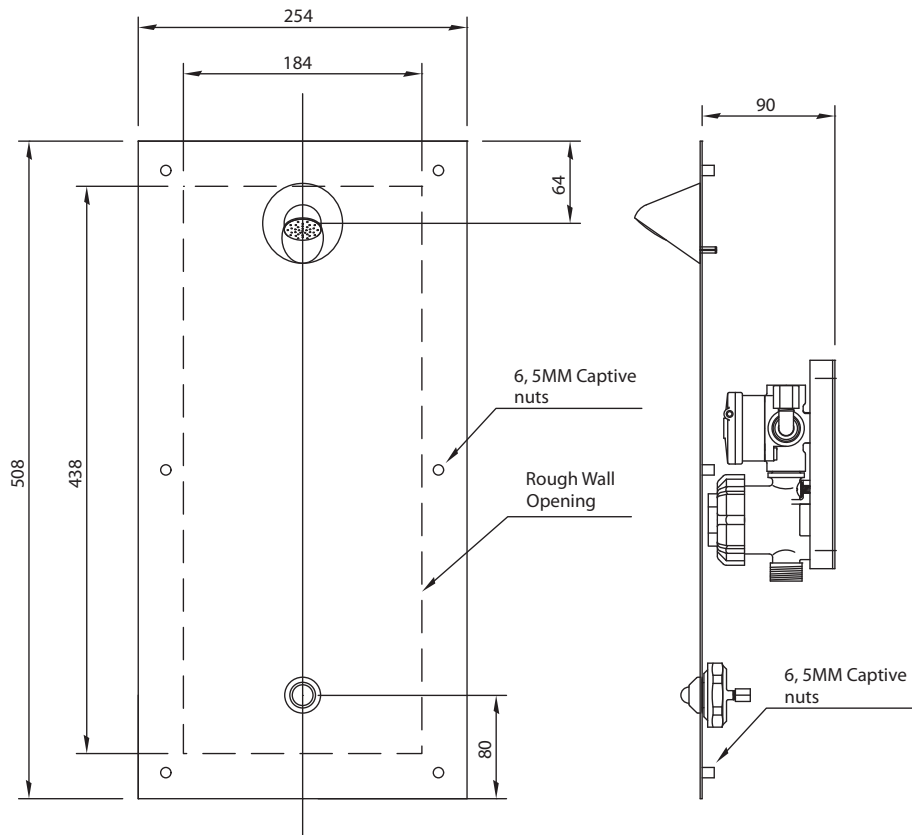


## NOTES



## INSTALLATION INSTRUCTIONS

### MODEL A1741-RM SECURITY SHOWER – REAR FIXED



For further information,  
contact the nearest RBA Group office:  
SYDNEY • MELBOURNE • BRISBANE  
Phone: 1300 788 778 • Fax: 1300 788 878  
info@rba.com.au • www.rba.com.au

## SPECIAL FEATURES

Secure Rear Mount  
Factory Assembled for easy, low cost installation  
Owner Adjustable Flow Time

Space Saving Design  
Vandal Resistant Design  
Self Closing Valve

## HYDRAULIC

Flow time – 5–60 seconds adjustable  
Pressure – Max 600 kPa  
Min 200 kPa  
Shower rose flow rate – 7 l/m  
Watermark & WELS Approval  
Single Temp, inlet connection ½" Bsp

## COMPONENTS

Stainless Steel Face Plate  
Pneumatic Operated Self Closing Valve  
6 x M5 S/S fixing rods, 300 long with nuts and washers

Suicide Resistant Shower Rose  
Vandal Resistant Pneumatic Push Button

## DESCRIPTION

The rear access security shower provides an economic and space saving solution to showering facilities. Costly installation time is dramatically reduced as shower is predominantly assembled in the factory, requiring only one supply connection. Designed to meet the rigorous requirements for penal institution installations, the unit is supplied complete with pneumatic operated self closing valve, vandal resistant activation button, and suicide resistant shower rose. The unit is designed to fit within a 100 thick wall.

## CONSTRUCTION

The panel is manufactured from heavy gauge type 304 stainless steel, with all exposed surfaces polished to a satin finish. The shower rose is CP heavy duty brass construction, conical shape for suicide resistance, and fitted with a 7 l/m flow control. Fixing is with security type screws and wall anchors provided by others.

## OPERATION

Shower is activated by pushing the button, flow will cease when preset time is achieved.

## INSTALLATION

- 1) Rough wall opening 438mm high x 184mm wide x 100mm deep should be left to accommodate the valve and connections, with access to the rear. Wall opening may be reduced or altered, if valve is to be located in the duct at rear.
- 2) Single temp water supply should be terminated with a mini-cock, within 300mm of the valve location.
- 3) Hold the panel centred over the opening and mark the penetrations for the fixing rods.
- 4) Drill the holes, minimum 6mm, through the wall.
- 5) Screw the rods into the nuts on the rear of the panel, pass the rods through the holes, secure the panel at the rear with the nuts and washers provided, and cut off excess rod. If necessary, seal the panel to the wall with silicone.
- 6) Locate and secure the Air Control Valve to the wall at the rear, and make the necessary connections. Ensure that the lines are flushed thoroughly before making final connection from mini-cock to valve.
- 7) Turn on the supply, activate the valve and check for leaks. If flow time adjustment is required, refer to the enclosed "Air Control Valve Installation Instructions".