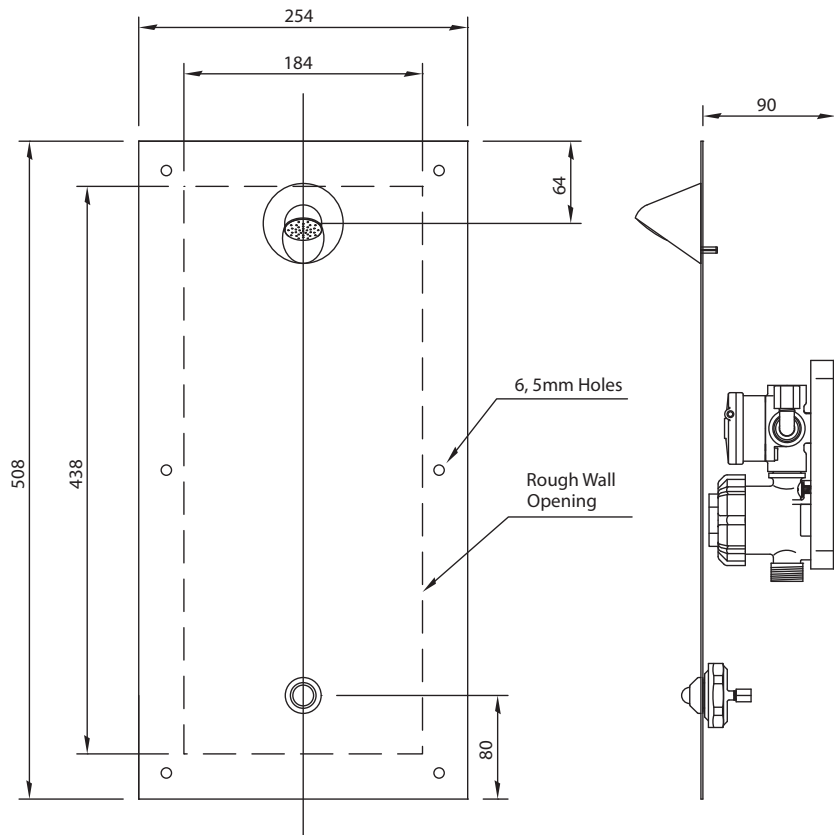


NOTES



For further information,
contact the nearest RBA Group office:
SYDNEY • MELBOURNE • BRISBANE
Phone: 1300 788 778 • Fax: 1300 788 878
info@rba.com.au • www.rba.com.au



INSTALLATION INSTRUCTIONS

MODEL A1741-FA SECURITY SHOWER – FRONT FIXED



SPECIAL FEATURES

Front Access	Space Saving Design
Factory Assembled for easy, low cost installation	Vandal Resistant Design
Owner Adjustable Flow Time	Self Closing Valve

HYDRAULIC

Flow time – 5–60 seconds adjustable
Pressure – Max 600 kPa
Min 200 kPa
Shower rose flow rate – 7 l/m
Watermark & WELS Approval
Single Temp, inlet connection ½" Bsp

COMPONENTS

Stainless Steel Face Plate	Suicide Resistant Shower Rose
Pneumatic Operated Self Closing Valve	Vandal Resistant Pneumatic Push Button

DESCRIPTION

The front access security shower provides an economic and space saving solution to showering facilities. Costly installation time is dramatically reduced as shower is predominantly assembled in the factory, requiring only one supply connection. Designed to meet the rigorous requirements for penal institution installations, the unit is supplied complete with pneumatic operated self closing valve, vandal resistant activation button, and suicide resistant shower rose. The unit is designed to fit within a 100 thick wall.

CONSTRUCTION

The panel is manufactured from heavy gauge type 304 stainless steel, with all exposed surfaces polished to a satin finish. The shower rose is CP heavy duty brass construction, conical shape for suicide resistance, and fitted with a 7 l/m flow control. Fixing is with security type screws and wall anchors provided by others.

OPERATION

Shower is activated by pushing the button, flow will cease when preset time is achieved.

INSTALLATION

- 1) Rough wall opening 438mm high x 184mm wide x 100mm deep should be left to accommodate the valve and connections.
- 2) Single temp water supply should be terminated with a mini-cock or similar, at a point 30mm from the side of the opening, and 50mm from the bottom of the opening, on either side.
- 3) Fix the Air Control Valve in the centre of the opening, on the rear face, ensuring that the valve does not extend past the finished wall face. Flush the supply line and connect the water supply to the valve, using the braided S/S hose provided.
- 4) Hold the panel in position centred on the opening, and mark the fixing holes.
- 5) Drill and plug the holes, connect the valve to the shower rose and push button with the tube provided, and turn on the water.
- 6) Activate the valve and check for leaks. To adjust the flow time see "Air Control Valve Installation Instructions" included.
- 7) Fix the panel in position using S/S security screws provided by others, and if necessary seal the panel to the wall using silicone.
- 8) Activate the panel and check operation, to ensure tube have not been pinched or kinked while fitting the panel.