



rba

STAINLESS STEEL CORNER BASIN



Construction

Basin is constructed in one piece from 1.9mm type 304 stainless steel with all exposed surfaces polished to a satin finish, and corners ground to a rounded surface. Basin is supplied with in-built fixing brackets, single 35mm diam taphole and 40mm plug and waste outlet. Also includes 2 x s-clips for unit to wall. Wall fixings and tap supplied by others.

Outlet: Furnished with 40mm plug and waste.

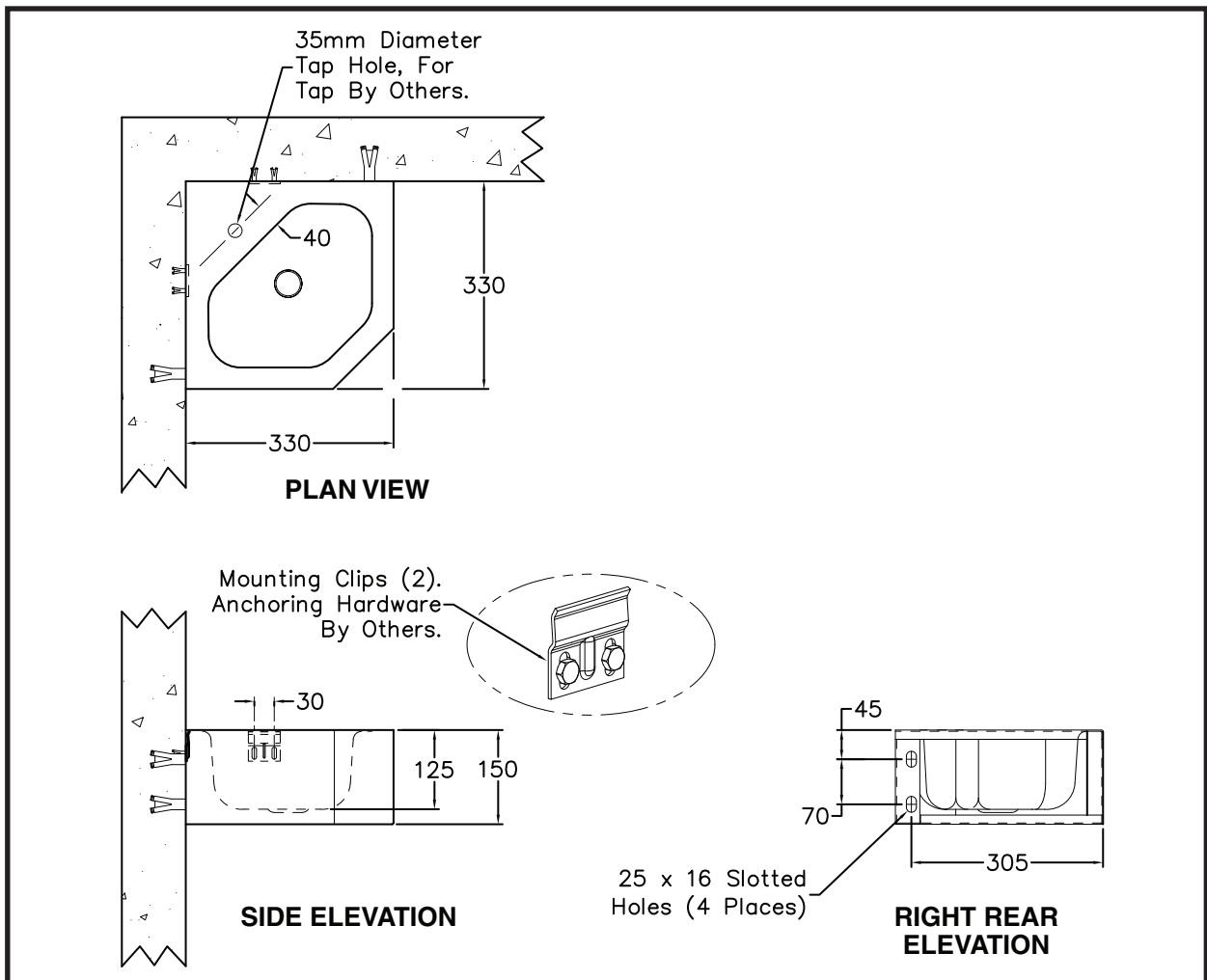
Installation

Basin is vandal resistant, and should be mounted on a suitably constructed wall to support the unit, using the brackets provided, and wall anchors provided by others.

This basin is not designed to comply with AS1428.1-2001.

Typically the basin should be mounted with the rim at 864mm above FFL, when not installed in a disabled area, or at a height suitable for the application.

Following fixing to the wall, RBA recommends running a bead of silicone between basin and wall.



As improvements in the design and performance of RBA products are continuous, specifications may be subject to change without notice. The illustrations and descriptions herein are applicable to production as of the date of this Technical Data Sheet. Revised 01/10 Printed in Australia © 2010 by RBA Group TD/Model RBA8866/0110